

FSW-2104

Non-Managed Fast Ethernet Switch



The FSW-2104 provides a low cost solution for non-managed Ethernet fiber switches. The FSW-2104 is a 4-port 10/100Base-TX plus 1-port 100Base-FX Fast Ethernet switch. It is designed for small workgroup applications that require a long distance connection to the backbone, such as between buildings, offices, or within a campus location. FSW2104 provide full-duplex capability on each auto-negotiating port, for enhanced performance. A wide range of transceiver selection provides fiber connection with SC, FC or ST type connectors in multimode or single mode and at distance from 2 to 120km as well as BiDi (single fiber) at distances of 20, 40, 60, or 80km.

Features

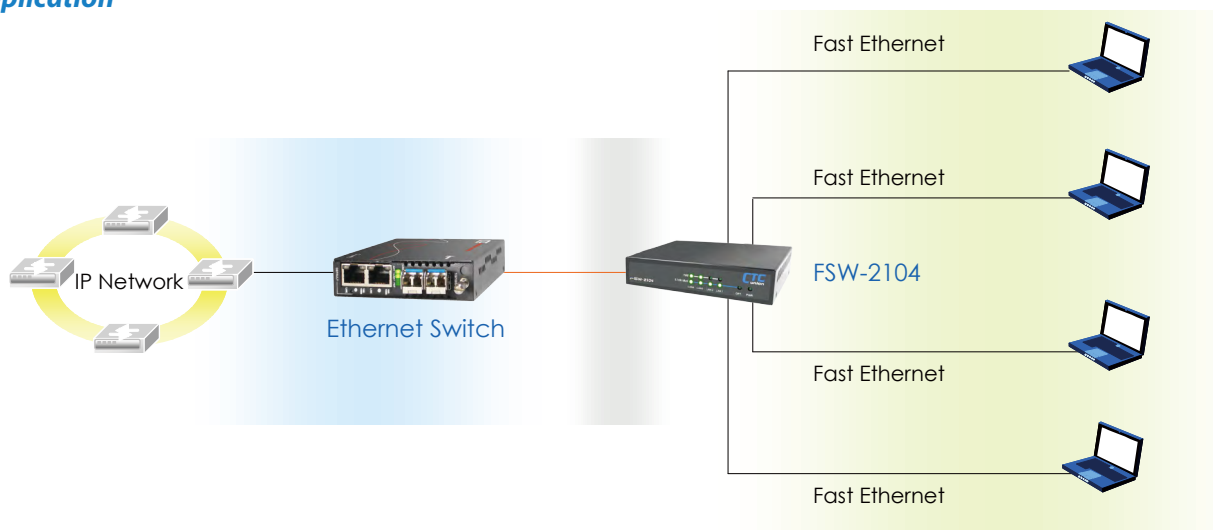
- ◆ 4-Port 10/100Base-T(X) to 100Base-FX
- ◆ Auto-Negotiation
- ◆ Auto MDI / MDIX
- ◆ Forward 1552 bytes (Max.) packets
- ◆ Supports 1K MAC address
- ◆ 512k bits packet buffer memory
- ◆ Supports broadcast storm protection

Specifications

Optical Interface	Connector	1x9 (SC, ST)
	Data rate	100Mbps
	Duplex mode	Full duplex
	Fiber	MM 50/125µm, 62.5/125µm. SM 9/125µm
	Distance	MM 2km, SM 15/30/50/80/120km, WDM 20/40/60/80km
Wavelength	MM	1310nm, SM 1310,1550nm
	WDM	1310Tx/1550Rx (type A) 1550Tx/1310Rx (type B)
Electrical Interface	Connector	RJ-45
	Data rate	10Mbps, 100Mbps
	Duplex mode	Half / Full duplex

Electrical Interface	Cable	10Base-T Cat.3, 4, 5, UTP, 100Base-TX Cat.5, 5e or higher
Standards		IEEE 802.3, IEEE 802.3u
Indications		LED (FX Link, TX SPD, TX Link/Act)
Power Input	Card	: 5 VDC
	Standalone	: AC, DC options
Power Consumption		< 4W
Dimensions		138 × 77 × 28mm (D × W × H)
Weight		450g
Temperature		0 ~ 50°C (Operating), 0 ~ 70°C (Storage)
Humidity		10 ~ 90% non-condensing
Certification		CE, FCC, RoHS
MTBF		65,000 hrs

Application



Ordering Information

Model Name	Description
FSW-2104	4-port 10/100Base-T(X) to 100Base-FX unmanaged Switch

Connector Type	Connectivity Distance
SC	002: 2km 015: 15km 030: 30km 050: 50km 080: 80km 120: 120km
	20A: WDM 20km A type 20B: WDM 20km B type 40A: WDM 40km A type 40B: WDM 40km B type
	60A: WDM 60km A type 60B: WDM 60km B type 80A: WDM 80km A type 80B: WDM 80km B type

Connector Type Connectivity Distance

FSW – 2104 –

Example: FSW – 2104 – SC002